

"G"

TP 422-LDM-04.

**PM**

G 41 115  
G 45 115  
G 45 125  
G 46 115  
G 46 125  
G 47 115  
G 47 125  
G 92 225  
G 93 225  
G xx xxx/A

**I.**

**1.1**

( ) G  
( )  
G xx xxx/A  
1 6.  
SN.

**1.2**

G  
MZ .376/2000Sb.)  
550° C  
§3  
50 a .1

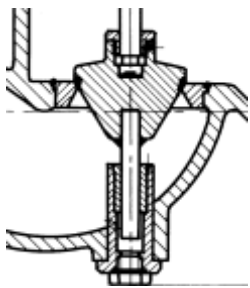
SN EN 60 534-1.

- II. SN EN 1349 (<0,5% Kvs) - G 45, G 46  
- II. SN EN 1349 (<1,0% Kvs) - G 47  
- III. SN EN 1349 (< 0,1% Kvs) - G 41  
- IV. SN EN 1349 - G 92  
- V. SN EN 1349 - G 93

- o 60 m/s, 90 m/s  
- 45 m/s.  
- G 47 4,0 a 3,5 m/s.  
- 1,5 a 3,5 m/s.

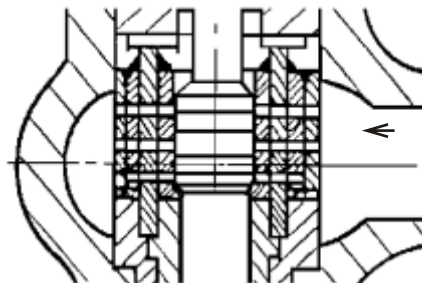
1.3

- a) G 41
- b) G 45
- c) G 46
- d) G 47
- e) G 92 a G 93 ( )



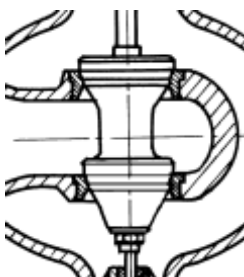
1.

( G 41 )



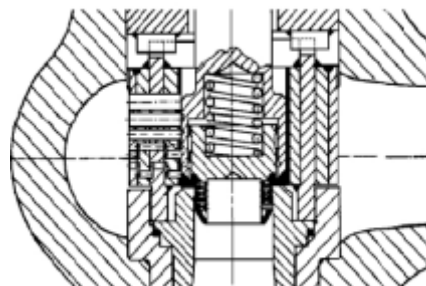
5.

( G 92 )



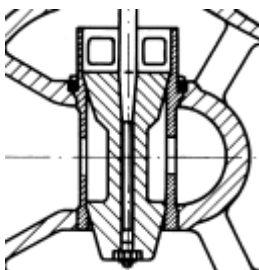
2.

( G 45, G 46 )



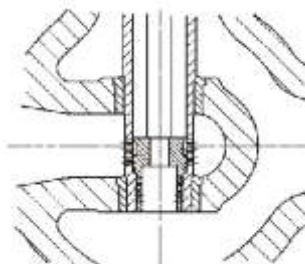
6.

( G 93 )



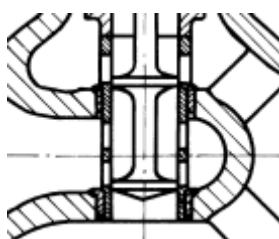
3.

( G 45, G 46 )



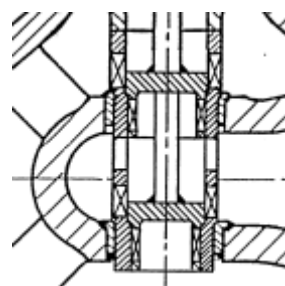
7.

( G xx / A )



4.

( G 47 )



8.

( G xx / A )





3.7

:  
 G 45,  
 ( G 41, G 46 G 47 ).  
 -1  
 -1

3.8

:  
 ( )

3.9

:  
 ( )

TP 422-LDM-04  
 SN 13 3060  
 SN EN 60 534-1

1, 2, 3, 4.

[M a] :

PN [M a]	[°C]											
	200	250	300	350	400	425	450	500	525	550	575	
<b>1.0619</b> (42 2643.1)	16	1.60	1.38	1.24	1.09	0.94	0.70	0.47	---	---	---	---
	25	2.50	2.15	1.93	1.79	1.47	1.10	0.74	---	---	---	---
	40	4.00	3.44	3.09	2.72	2.35	1.77	1.18	---	---	---	---
	63	6.30	5.42	4.87	4.29	3.70	2.78	1.87	---	---	---	---
	100	10.0	8.61	7.73	6.80	5.88	4.42	2.96	---	---	---	---
	125	12.5	10.8	9.66	8.50	7.35	5.53	3.70	---	---	---	---
	160	16.0	13.8	12.4	10.9	9.41	7.07	4.74	---	---	---	---
	250	25.0	21.5	19.3	17.0	14.7	11.0	7.41	---	---	---	---
<b>1.7357</b> (42 2744.1)	16	2.00	1.92	1.92	1.85	1.70	1.59	1.59	1.24	0.82	0.54	0.36
	25	3.12	3.00	3.00	2.89	2.66	2.48	2.48	1.94	1.28	0.85	0.57
	40	5.00	4.81	4.81	4.62	4.25	3.98	3.98	3.11	2.05	1.37	0.90
	63	7.87	7.58	7.58	7.29	6.70	6.27	6.27	4.90	3.23	2.15	1.42
	100	12.5	12.0	12.0	11.5	10.6	9.95	9.95	7.77	5.13	3.42	2.26
	160	20.0	19.2	19.2	18.5	17.0	15.9	15.9	12.4	8.22	5.48	3.62
	250	31.2	30.0	30.0	28.9	26.6	24.8	24.8	19.4	12.8	8.56	5.67
	320	40.0	38.4	38.4	37.0	34.0	31.8	31.8	24.8	16.4	11.0	7.24
	400	50.0	48.1	48.1	46.2	42.5	39.8	39.8	31.1	20.5	13.7	---
	500	62.4	60.0	60.0	57.8	53.2	49.6	49.6	38.8	25.6	17.1	11.3



tel.: +7 (950) 002-55-00 E-mail: info@ldmvalves.ru  
[www.ldmvalves.ru](http://www.ldmvalves.ru)